



# Canadian Professional Association for Transgender Health



## Newsletter

VOLUME THREE • May 2008

### Call for Contributions

Next month's feature:  
Annual General  
Meeting

Contact: Gail Knudson

Email:

[gail.knudson@vch.ca](mailto:gail.knudson@vch.ca)



### President's May Report

Thank you to everyone who submitted abstracts and posters for the conference!

We are launching the CPATH Forums this month and members should be receiving an invitation shortly to join the secured on-line system. Thank you to Nancy Liebs-Benke and Dr. Trevor Corneil for their efforts in making this happen.

Please note the changes/updates in the website regarding registration. We encourage you to register early to avoid the increased cost associated with late registration as well as

helping us to estimate the numbers for the caterers.

A block of rooms has been secured until June 5th under the name of CPATH. Please refer to the conference when making a room reservation. The conference rate is \$159.00 per night + taxes based on single or double occupancy.

See you in Toronto!

Gail

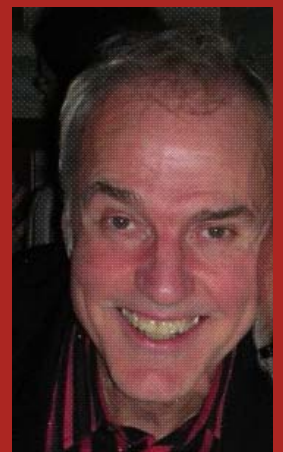
Gail Knudson

MD, MPE, FRCPC



### Member Profile - Jim Oulton

Jim Oulton MSW, RSW was recently presented the Ken Belanger Memorial Award for his contribution to Transgender Health in Nova Scotia. The award is presented to a Registered member of the Nova Scotia Association of Social Workers who has demonstrated an explicit and unflinching commitment to pursuing social justice and to challenging oppression in its many forms; who has broken new ground working for, and on behalf of gay, lesbian, bisexual and transgendered persons; and/or has demonstrated a particular concern for gay, lesbian, bisexual and transgendered youth. Congratulations Jim!





## Front Line Health Update

The Frontline Health Forums are virtual communities made available through the Frontline Health program. The Forums allow frontline health and social service professionals, as well as students, to connect and communicate in a secure, virtual environment, regardless of their location, time zone or type of medical practice. The Frontline Health Forums aim to: expand frontline practitioners' professional networks; encourage sharing of information, valuable resources and best practices to accelerate transfer of knowledge; facilitate collaboration; and, support mentoring.

The CPATH Forums is the first Frontline Health Forum to go live. CPATH members will be receiving an invitation to join the CPATH Forums in the next week, so keep an eye out for an email from Nancy Liebs-Benke. The email will provide you with a link to register. Once your account has been activated and you are logged in, you'll be able to start communicating with each other in various discussions that have been set up by topic and by province. We also want you to have a positive experience in these forums, so we've created a "Sandbox" for you to "play" in these "test forums" until you feel comfortable enough to participate in the "real" forums. So get ready, and start networking!!

## Ontario Update

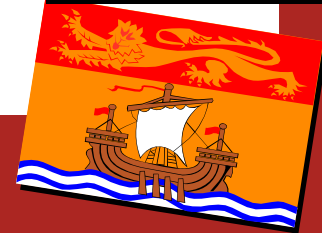
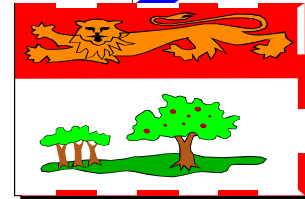
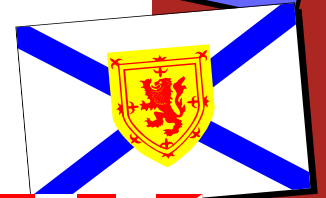
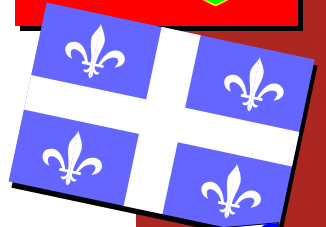
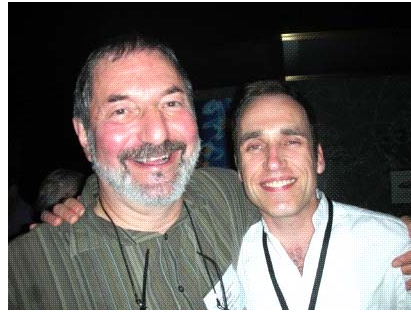
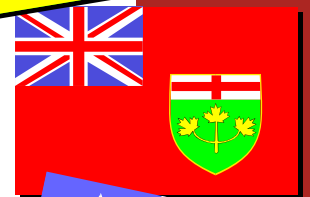
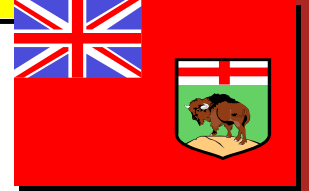
On Thursday May 15, the Ontario government announced plans that sex reassignment surgeries (SRS) would, once again, be included in the Ontario Health Insurance Plan (OHIP)'s Schedule of Benefits. The intention to re-instate funding, covered from 1971-1998 prior to its de-listing, is an important step towards providing comprehensive services for trans Ontarians.

It appears that the Centre for Addiction and Mental Health (CAMH) will be an assessor site; whether the Province will move to approve other assessors remains to be seen. Other potential assessor sites could help improve the accessibility and timeliness of care for trans Ontarians by providing surgery assessments that are both locally-relevant and integrated into their primary care setting.





# CPATH 2007 Photos





## Calendar of Events

- May 15th — Early Bird Registrations ends
- May 16th—Just in Time Registration starts
- May 30th — Provincial updates due

## May 2008

Sun	Mon	Tue	Wed	Thu	Fri	Sat
				1	2	3
4	5	6	7	8	9	10
11	12	13	14	15 Early Bird ends	16 Just in Time starts	17
18	19	20	21	22	23 Deadline for June newsletter	24
25	26	27	28	29	30	31

**A big THANKS to all of our supporters!**





## Conference Program

Friday, June 27<sup>th</sup>, 2008 **DAY ONE**

0900-0910	<b>Welcome</b>	Organizing Committee
0910-0930	<b>Presidential Address</b>	Gail Knudson MD, MPE, FRCPC
0930-1000	<b>Transgender Issues Across Canada</b>	Helen Kennedy Exec Director, Egale Canada
1000-1045	<b>Supporting Partners of Trans People</b>	Arlene Lev LCSW, CASAC
1045-1100	<b>BREAK</b>	
1100-1230	<b>Cross Country Update</b>	BC, AB, SK, MN
1230-1330	<b>BUFFET LUNCH</b>	
1330-1530	<b>Concurrent sessions</b>	
	<b>Health Care / Psychology</b>	<b>Youth/Advocacy/SOFFA</b>
	A1	B1
	A2	B2
	A3	B3
	A4	B4
1530-1600	<b>BREAK &amp; TRAVEL</b>	
1600-1700	<b>Site visit: Sherbourne Health Centre and Rainbow Health Ontario</b>	Rupert Raj MA, RCC Anna Travers MSW
1700-1900	<b>Poster Session with wine and cheese</b>	

Saturday, June 28<sup>th</sup>, 2008 **DAY TWO**

0900-0950	<b>Providing a Founding Framework: The Vision and Activism of Three Transgender Pioneers</b>	Aaron Devor PhD
0950-1045	<b>Approach to the Physical Examination in the Transgender Individual</b>	Jamie Feldman MD, PhD
1045-1100	<b>BREAK</b>	
1100-1230	<b>Cross Country Update</b>	ON, PQ, Atlantic provinces
1230-1330	<b>BUFFET LUNCH</b>	
1330-1430	<b>Annual General Meeting</b>	Gail Knudson MD, MPE, FRCPC
1430-1630	<b>Concurrent sessions</b>	
	<b>Health Care / Psychology</b>	<b>Youth/Advocacy/SOFFA</b>
	C1	D1
	C2	D2
	C3	D3
	C4	D4
1630-1645	<b>BREAK</b>	
1645-1700	<b>Closing</b>	Jim Oulton, MSW, RSW
1700-1800	<b>Clinical Supervision of challenging cases</b> (pre-registration required)	